

Middle School Honors Preparation Materials 2018

What to Expect

Middle school honors placement exams will be administered at your school by your teachers. All exams will be taken on computers except for the math open ended which will be completed on paper.

Studying for the exam such as reviewing concepts, vocabulary and content is not needed as exams are assessing skills and critical thinking within the content areas rather than the topics, subjects and/ or texts studied.

Exam Dates and Test Specifications

Date	Content	Placement Exam	Writing Sample
Monday, March 19	English Language Arts	45 minutes Two literary texts and 20 selected response choice questions	60 minutes Constructed response question based on two nonfiction texts
Tuesday, March 20	Social Studies	45 minutes 20 selected response questions	60 minutes Students taking the Honors Social Studies Placement will complete the writing sample with ELA above.
Wednesday, March 21	Mathematics	45 minutes 20 selected response and short answer questions	45 minutes 1 constructed response
Friday, March 23	Science	45 minutes 20 selected response questions	45 minutes 1 constructed response

Types of Questions

Selected Response Questions

These questions ask you to select one or more answer choices from a list of four choices.

Constructed-Response Questions

These questions require you to demonstrate your knowledge in a subject area by creating your own response to particular topics. Essays and short-answer questions are types of constructed-response questions. For example, an essay question might present you with a topic and ask you to identify, explain or analyze the information presented and support your claim with specific evidence from the information or text provided along with an explanation.

English Language Arts Sample Questions

The English Language Arts placement exam includes two literary texts that students need to read in order to answer 20 selected response questions. Questions are developed from the New Jersey Learning Standards for English Language Arts and focus on identifying, analyzing and/ or inferring key ideas, details, and the craft and structure of the text.

Sample Honors ELA 6 Questions

<p>Read the following poem and answer questions.</p> <p style="text-align: center;">November</p> <p>Besides the autumn poets sing, A few prosaic days A little this side of the snow And that side of the haze.</p> <p>A few incisive mornings, A few ascetic eyes, - Gone Mr. Bryant's golden-rod, And Mr. Thomson's sheaves.</p> <p>Still is the bustle in the brook, Sealed are the spicy valves; Mesmeric fingers softly touch The eyes of many elves.</p> <p>Perhaps a squirrel may remain, My sentiments to share. Grant me, O Lord, a sunny mind, Thy windy will to bear!</p>	<p>1. Read the first stanza of the poem:</p> <p>"Besides the autumn poets sing, A few prosaic days A little this side of the snow And that side of the haze."</p> <p>Based on this stanza, what can you infer about "prosaic days"?</p> <ul style="list-style-type: none">A. Prosaic days are extremely cold, snowy, and unpleasant.B. Prosaic days are extremely hot, dusty, and unusual.C. Prosaic days are warm, beautiful, and long-lasting.D. Prosaic days are not especially cold, hot, or interesting. <p>2. What is a theme of this poem?</p> <ul style="list-style-type: none">A. Getting through the autumn can be a challenge.B. People do not appreciate anything unless they lose everything.C. Nature is more pleasant and enjoyable in autumn than at any other time of the year.D. People should spend less time outdoors in autumn. <p>3. What point of view is this poem expressed from?</p> <ul style="list-style-type: none">A. first person point of viewB. second person point of viewC. third person limited point of viewD. third person omniscient point of view
--	--

Sample Honors ELA 7 Question

Read the following short story and answer the corresponding questions.

A Special Delivery

"Anything you want, anytime you need it."

The message showed up at the same time on the same day: December 12th, at 12pm, on computers across the nation. Simultaneously, couriers delivered embossed envelopes containing cards with the same message to the offices of the five hundred largest companies in the country, as well as all of the major news outlets.

One of those many cards found its way to the desk of Christoph Ferstad, a business reporter at one of the biggest newspapers in Washington, D.C. It arrived during his lunch break and was waiting when he returned, burrito in hand. Christoph was only too happy to put off getting back to work, so he picked up the card to inspect it more closely. It was a beautiful piece of design, and obviously expensive. The paper felt silky to the touch and weighed heavily in his hands. The background was stark black, with the words printed out in a crisp white font. There was no explanation on the back, just a website address...

Reread these sentences from the text and answer the following questions.

Whenever anyone questioned Anytime, something horrible seemed to happen to that person. Christoph began a spreadsheet, outlining every instance that something awful had befallen a person who'd gone up against Anytime. By lunch, Christoph had a list of more than one hundred examples. Goosebumps graced his arms. This could be his big story, the one that would win him a Pulitzer Prize. There was absolutely something underhanded going on here.

1. Based on this evidence, what conclusion can you draw?

- A. Most people are suspicious of Anytime's actions, but they are not willing to go up against the company.
- B. Anytime is most likely responsible for the "horrible" things that keep happening to people who go up against it.
- C. Christoph believes that the pattern of "horrible" things happening to people who question Anytime is a coincidence.
- D. Very few people question Anytime's actions or try to go up against the company.

2. Based on these sentences, what does the word "underhanded" mean?

- A. pleasant and exciting
- B. unplanned and accidental
- C. fair and justifiable
- D. dishonest and sneaky

3. Based on the text, how can the character Christoph best be described?

- A. smart, friendly, and optimistic
- B. curious, observant, and determined
- C. cheerful, lucky, and laid-back
- D. cautious, quiet, and nervous

Sample Honors ELA 8 Question

Read the following short story and answer the corresponding questions.

Seraphic Melody

It was in the spring of my 64th year that I first heard of the seraphic melody. A generous grant from the Yale Institute of Sacred Music allowed me to spend two years in Vienna, Austria, in the dust of the basement libraries that riddle the old city.

I had an apartment in the Margareten district. Though the subway provided convenient transport, I often found myself wandering. I've always had a strange feeling that the forgotten makers of history watch us, hidden in some crinkle of time—never was this feeling as strong as in Vienna. Munching on *kasekrainer*, or sausage, that I bought from street vendors, I wandered the stone and glass, alone with my thoughts. I even dreamed about aimless wanderings.

But that was my free time. In truth, I spent most of my waking hours seated, bent over a book, or else with my nose to library stacks. I frequented the major institutions, of course. But my research at that time—the rather scholarly branch of pre-Baroque xenharmonics (alternate music tuning systems)—led me further and further off the beaten path, to museums and specialized libraries on the city's suburbs, and from there to the personal libraries and collections of Vienna's elusive musical devotees...

1. At the end of the story, the narrator goes to an address given to him by Herr Wolf. What motivates the narrator's actions?

- A. He wants to learn more about the seraphic melody.
- B. He does not believe in the myth of the seraphic melody.
- C. He wants an excuse not to visit Herr Wolf ever again.
- D. He wants to show Herr Wolf that he is not gullible.

2. The narrator is a successful, recognized music scholar. What evidence from the passage best supports this conclusion?

- A. The narrator researches pre-Baroque alternate music tuning systems.
- B. The narrator receives a grant from the Yale Institute of Sacred Music.
- C. The narrator spends most of his time in libraries and academic institutions.
- D. The narrator becomes interested in a book in the library of Herr Wolf.

3. When the narrator mentions the seraphic melody to Herr Wolf, his face clouds over and he warns the narrator to forget the story. Based on this information, what can you conclude about Herr Wolf?

- A. Herr Wolf has no interest in the seraphic melody.
- B. Herr Wolf thinks the seraphic melody is a myth.
- C. Herr Wolf has never heard of the seraphic melody.
- D. Herr Wolf has experience with the seraphic melody.

Sample English Language Arts and Social Studies Constructed Response

Today you will read two texts presenting information on European Exploration of the Americas during the 15th and 16th centuries. When you have evaluated each source, write an essay that analyzes how each source presents a different perspective on European Exploration. Be sure to use evidence from both sources in your essay.

Social Studies Sample Questions

All honors placement assessments in social studies include 20 skill-based selected response questions. Students are assessed on their ability to interpret graphs, maps, charts and images. Students will also utilize historical thinking skills to analyze and interpret primary sources. Five of the selected response questions will be based on a non-fiction reading passage.

Questions are derived from the following strands under the New Jersey Learning Standards for Social Studies:

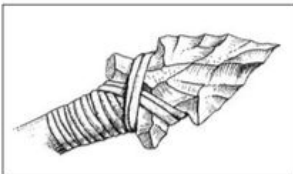
- Civics, Government, and Human Rights
- Geography, People, and the Environment
- Economics, Innovation, and Technology
- History, Culture, and Perspectives

Sample Honors Social Studies 6 questions

Base your answers to questions 1 and 2 on the image below.

Artifacts of Early People

Archaeologists study artifacts to learn more about people who lived long ago. The four examples below are artifacts used by early people in New York.



Spearhead

Made by chipping flint, or stone, until it had a sharp edge. The sharpened flint was then attached to a wooden handle. Used for hunting.



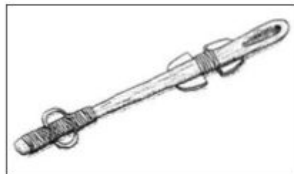
Birchbark Basket

Made of birchbark that was folded into a basket shape and held together either with thread or with a handle. Used for storing and cooking food.



Pottery

Made from clay mixed with plant fibers, sand, and crushed shells, and then coiled into thin rolls on top of one another. Used for storing and cooking food.



Atlatl

A short staff made of wood or bone used as a lever to throw a spear. Also called a spear-thrower when hunting.

1. Flint that was sharpened and used to hunt was made into
 - A. a spearhead
 - B. a pot
 - C. an atlatl
 - D. a basket
2. Birchbark baskets and pottery artifacts tell us that early people
 - A. sewed animal skins
 - B. used metal
 - C. stored food
 - D. hunted buffalo

Source: *Horizons: New York*, Harcourt, 2004 (adapted)

Base your answer to question 3 on the chart below.

Some Native American Indian Cultures			
Culture	Location	Food Source	Environment
Pacific Northwest Coast	Western coast, Oregon to Alaska	Fishing	Coastal, with forests
Anasazi	Southwest, chiefly Arizona and New Mexico	Farming	Mountainous river valleys
Iroquois	Northeast, chiefly New York	Hunting and farming	Woodlands of the North
Creek	Southeast, Alabama and Georgia	Farming with some hunting	Southern climate, semitropical

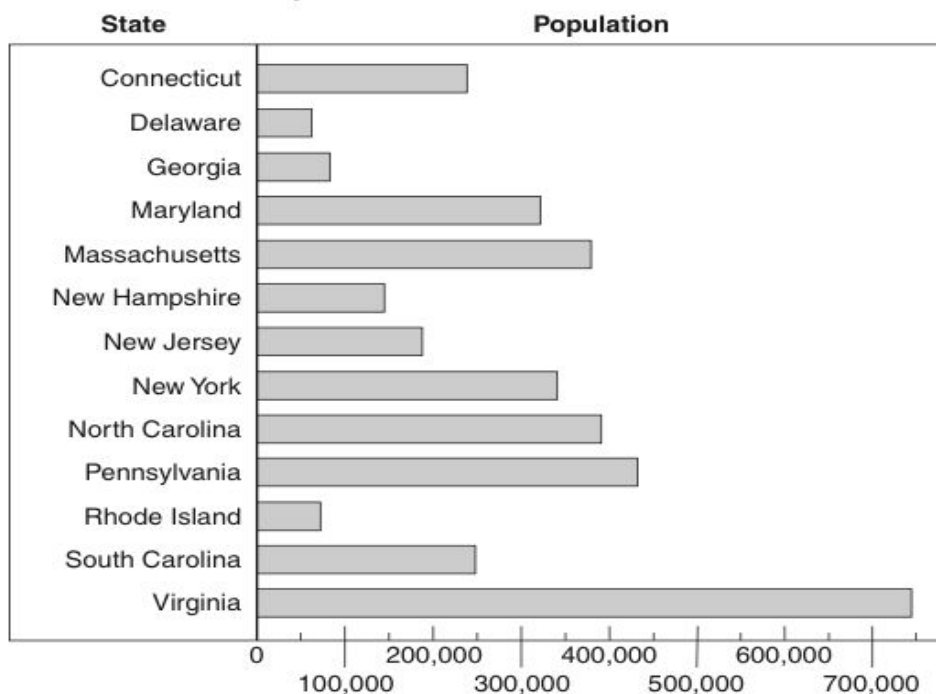
Source: *Exploring American History Workbook*, Globe Book Co. (adapted)

3. Which conclusion about these Native American Indians is most clearly supported by the chart?
- A. Geographic factors helped shape native lifestyles.
 - B. Most native peoples were nomadic.
 - C. Native cultures were all very similar.
 - D. Native peoples in warmer climates were more advanced than those in colder climates.

Sample Honors Social Studies 7 questions

Base your answer to question 1 on the graph below.

Estimated Population of the Thirteen States in 1790



Source: U. S. Census, 1790 (adapted)

1. Which statement about the population of the states in 1790 is best supported by the information on this graph?
 - A. The population of Virginia was less than 500,000 people.
 - B. Both New York and Massachusetts had more than 300,000 people.
 - C. The population of New Jersey was larger than the population of North Carolina.
 - D. Pennsylvania had the largest population.

Base your answer to question 2 below on the graph below.

Preparations for War		
	England	Thirteen Colonies
Population	Approximately 12,000,000	Approximately 2,800,000
Manufacturing	Highly developed and flourishing	Practically none
Money	Richest country in the world	No money to support the war effort
Army	Large, well-trained army plus mercenary Hessians	All-volunteer forces — willing to fight but poorly equipped
Leaders	Many dedicated and able officers	Few officers capable of leading
Geography	Strange land with long distance to base of supplies	Familiar land with easy access to limited amounts of supplies

2. Which conclusion about the American Revolutionary War is most clearly supported by information in this chart?
 - A. England had few advantages in a war with her American colonies.
 - B. The Thirteen colonies had more advantages than disadvantages upon entering the war.
 - C. England did not believe that the thirteen colonies were worth the expense of a war.
 - D. The thirteen colonies had few, but important advantages in the war with England.

Base your answer to question 3 on the conversation below between speakers A, B, C, and D.

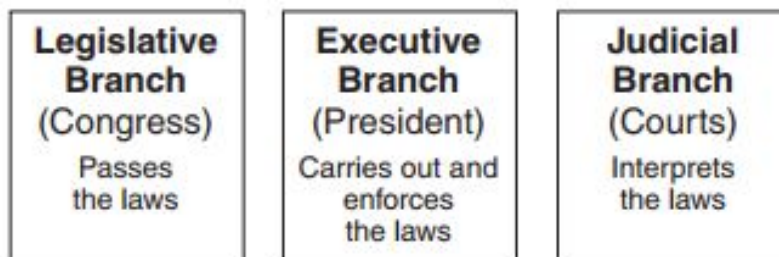
Speakers A, B, C, and D are discussing relations between Great Britain and the American Colonies in early 1776.

- Speaker A:* Let me say quite simply that making laws is not a basic right of the colonies. We are part of the British Empire and should obey the laws made by Parliament.
- Speaker B:* Let us first try to have our wrongs set right by just and peaceful means—by boycotting British goods, for example—before we take a step so extreme as to fight our mother country.
- Speaker C:* A government of our own is our natural right, and it is better to form one now, when we have the power, than to wait until we may have such a chance again.
- Speaker D:* Let us behave like obedient children, who have received unjust blows from a beloved parent. Let us complain to our parent, but with words, not guns.

2. Which two speakers would have been most opposed to the Declaration of Independence when it was issued?
- A. A and B
 - B. A and C
 - C. B and D
 - D. B and C

Sample Honors Social Studies 8 questions

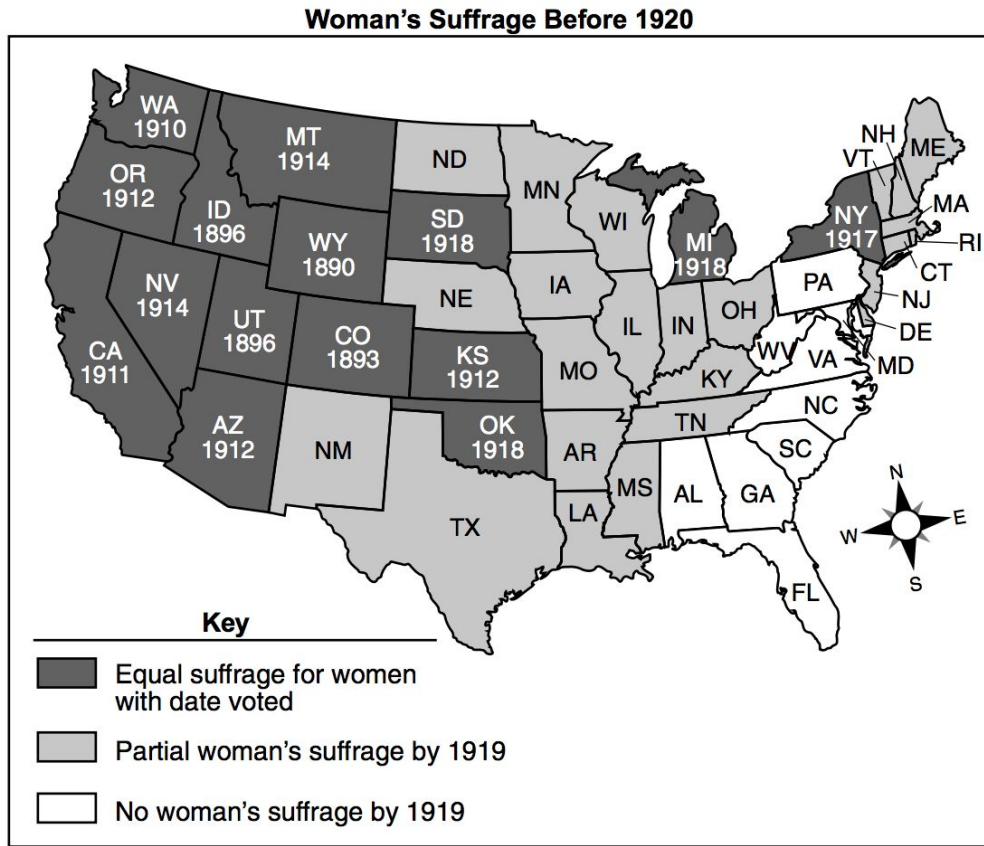
Base your answer to question 1 and 2 on the diagram below.



1. Which political principle is shown in this chart?
- A. federalism
 - B. implied powers
 - C. separation of powers
 - D. unwritten constitution
2. Which conclusion about the system of government used in the United States is best supported by the chart?
- A. Voters elect the members of all three branches.
 - B. The president has the power to interpret the law.
 - C. The Supreme Court's decisions about laws can be appealed.
 - D. Laws are affected by all three branches of government.

Base your answer to question 3 on the map below.

Suffrage: the right to vote



Source: Sandra Opdycke, *The Routledge Historical Atlas of Women in America*, Routledge (adapted)

3. Based on the map, which region of the United States demonstrated the most support for complete voting rights for women before 1919?
- A. New England
 - B. South
 - C. Midwest
 - D. West

Mathematics Sample Questions

Questions on the Mathematics placement exam are standards based and focus on modeling and reasoning. There are 14 multiple choice questions and three open ended questions..

Grade 5 going into Honors Pre-Algebra Questions

1. Paul bought 4 meters of wood trim. He used 72 centimeters to frame a photo of his dog and three times that length to frame a photo of a friend. What length, in meters, of wood trim remained after Paul made the frames?

- a. 1.12 meters
- b. 2.88 meters
- c. 112 meters
- d. 288 meters

2. Which of the following questions can be answered by finding

$$8 \div \frac{1}{5} ?$$

- a. Emily gives $\frac{1}{5}$ of a pie to 8 students. How many pies does she give students?
- b. Sam has $\frac{1}{5}$ of a pie to share equally among 8 students. How many pies does Sam share?
- c. A teacher has 8 pies to share equally among 5 students. How many pies does each student get?
- d. Josh has 8 pies and gives $\frac{1}{5}$ of a pie to each student. How many students get a piece of pie?

3. Part A: Find the area of a rectangle that has a length of $\frac{5}{6}$ unit and a width of $\frac{3}{4}$ unit.

Part B: How many rectangles that have an area of $\frac{1}{24}$ square units will tile the rectangle described in Part A?

Grade 6 Going into 7 Algebra I Sample questions

1. Amy claims that $\frac{1}{2} \div \frac{1}{4} = 2$. Which of the following is true about Amy's claim?
- It is correct, because $\frac{1}{2}$ of $\frac{1}{4}$ is 2.
 - It is correct, because $\frac{1}{4}$ of 2 is $\frac{1}{2}$.
 - It is not correct, because $\frac{1}{4}$ does not divide 2 evenly.
 - It is not correct, because $\frac{1}{4}$ of $\frac{1}{2}$ is $\frac{1}{8}$.

2. What is the value of the expression $5ab - 2c$, where $a = 2$, $b = 3$, and $c = 0$?
- 8
 - 28
 - 30
 - 503

MS. WU'S BOOKS

Genre	Number of Books
Adventure	12
Fantasy	15
Mystery	14
Romance	9
Science Fiction	10

3. Ms. Wu counted the number of books she has in her classroom library by genre. The results are shown in the table above.

Part A: Complete the blanks below to describe a relationship between two types of books in Ms. Wu's library.

The ratio of _____ books to _____ books is 3:4.

Part B: Explain the answer given in Part A.

Grade 7 Algebra I Going into 8 Algebra II Sample questions

1. Alice bought a new cell phone. The cell phone company she bought the phone from charges \$50 per month for cell phone service, \$200 for the new phone, and a fee of \$175 if the contract is terminated before 2 years have expired. Which of the following linear equations models Alice's total cost in dollars, y , as a function of the number of months after she purchased the phone, x , if she terminates her contract before 2 years?

 - a. $y = 50x + 200$
 - b. $y = 50x + 375$
 - c. $y = 175x + 50$
 - d. $y = 375x + 50$

2. A pair of jeans costs x dollars and is subject to 7% sales tax. Using only one step, which of the following expressions could be used to find the final cost of the pair of jeans, in dollars?

 - a. $0.07x$
 - b. $1.07x$
 - c. $x + 7x$
 - d. $1 + 0.07x$

3. An object is dropped from a starting height that is a certain number of feet above ground. The number of feet the object falls after it is dropped can be found by performing the following steps.

 1. Let t represent the amount of time, in seconds, since the object was dropped.
 2. Square the variable from step 1.
 3. Multiply the result of step 2 by 16.

Part A Let s represent the starting height, in feet, of the object. Write an algebraic expression that can be evaluated to find the height of the object t seconds after it was dropped.

Part B An object is dropped from a starting height of 400 feet and falls for 5 seconds. Evaluate your expression from part A using these values to find the height, in feet, of the object 5 seconds after it was dropped. Show your work and explain your answer.

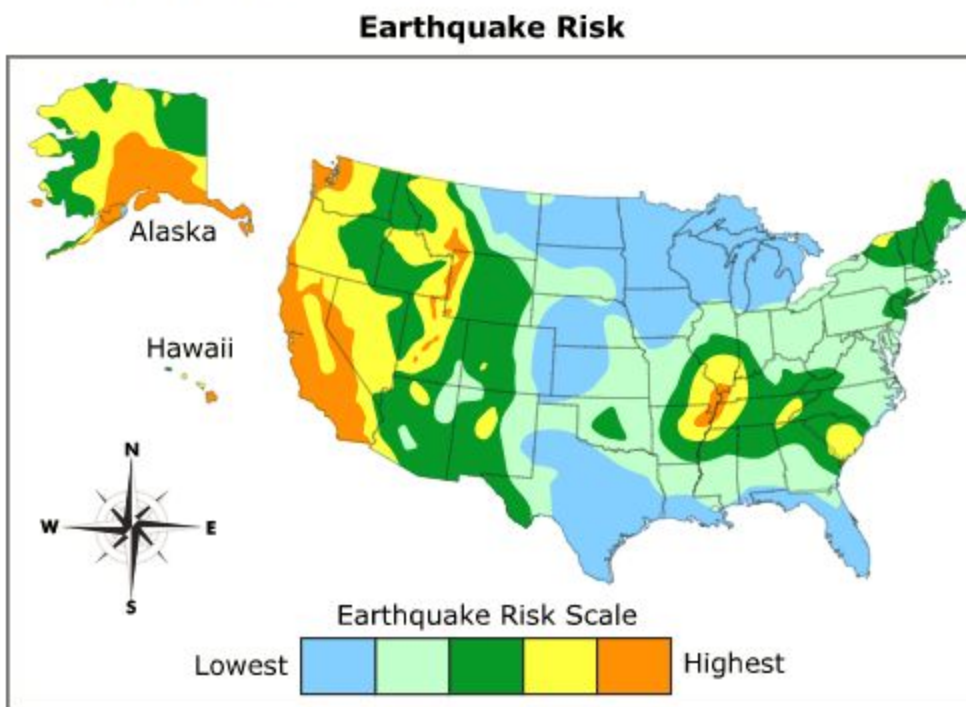
Science Sample Questions

The Science placement exam consists of 20 selected response and one constructed response in the disciplines of Life Science, Physical Science, and Earth and Space Science. For the selected response questions, students will be presented with a graph, table, infographic, or passage and respond to analytical, interpretive, or inferential questions. For the constructed response, students make a claim, predict, or explain scientific phenomena. Questions are standards based and focus on the Science and Engineering Practices of the Next Generation Science Standards.

Sample Honors Science 6 questions:

Earthquakes can strike anywhere on Earth, but they occur more frequently in certain areas.

The map highlights areas in the United States from lowest to highest risk of experiencing an earthquake.



1. Which is a valid statement? The highest risk of an earthquake happening is
 - A. On the West Coast
 - B. On the East Coast
 - C. In the Northeast
 - D. In the South

2. What is likely to be present in areas of high risk?

- A. Frequent tornadoes
- B. Frequent wildfires
- C. Presence of plate boundaries
- D. Presence of fossils

Constructed Response:

Lisette stands up at lunch and says, "I am solar powered." Adam says, "No way. You don't have any solar panels on you." Lisette smiles, "That's true. But, I get all my energy from the sun. That makes me solar powered." Adam laughs and says, "No you don't. The sun doesn't matter at all. All of your energy is from that salad in front of you." "Exactly!" Lisette exclaimed. Select the student you think most accurately describes where our energy comes from and use evidence to support your claim.

Sample Honors Science 7 questions:

Two round objects are sitting on different shelves. Both round objects fall to the floor.

1. What is true about the objects falling?
 - I. A force must be applied to cause the objects to begin moving.
 - II. There are opposite forces acting on the objects at a time.
 - III. Gravity only acts on the objects when they are falling.
 - A. Statement I and II
 - B. Statement I and III
 - C. Statement II and III
 - D. Statement I, II, and III

2. Which investigation identifies factors that affected the amount of energy transferred during the collision and will **best** help determine which object transferred the greatest energy when it hit the floor.
 - A. Weigh each object to determine its mass. The object with the greatest mass will have the greatest kinetic energy released when it hits the floor.
 - B. Take a video of each object as it hits the floor. The object that falls the quickest will have the greatest kinetic energy.
 - C. Measure the distance each object rolls after it hits the floor. The object that rolls the greatest distance released the greatest energy when it hit the floor.
 - D. Measure the dent in a block of clay when the object is dropped onto the clay. The object making the largest dent released the most energy when it hit the floor.

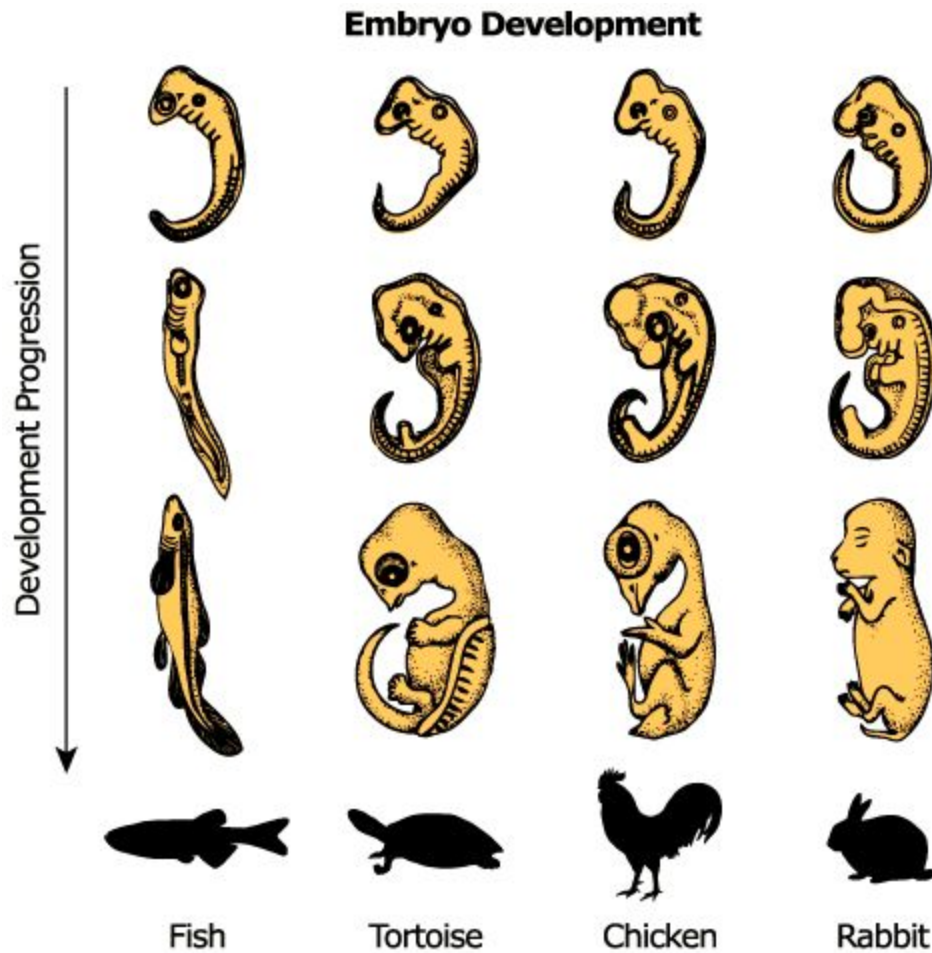
Constructed Response:

Many towns in NJ have started programs to decrease the deer population and reduce the negative effects that deer are having on people and the environment.

Solution	Description
Increased hunting	Change in hunting laws to allow more deer to be hunted in a season
Move deer out of area	Trap and move the deer to a place that can support a large population
Block and barricade	Build barriers and fences to keep deer away from roads, farms, and backyards.
Sprays	Use chemicals to keep deer away from roads, farms, and backyards

Choose two solutions for reducing the deer population and explain why each of these solutions would be effective. In your explanation, include why the two solutions you have not chosen will be ineffective.

Sample Honors Science 8 questions:



1. Which statement can best be supported by the pictures of embryos.
- A. Chickens are more closely related to tortoises than rabbits are to tortoises.
 - B. Rabbits, chicken, tortoises, and fish are equally related to each other.
 - C. Fish do not share a common ancestor with other vertebrates.
 - D. Fish and chickens are the least closely related.

A student observed that the outside of a cup got warmer when it was filled with a hot beverage. The student then performed an investigation to observe the effect a hot object would have on room-temperature water.

- The student started by placing a thermometer and 30 milliliters (mL) of water inside a cup.
- The student also boiled 150 mL of water in a beaker and then removed the beaker from the heat source.
- The student then tied metal washers to a string and took their temperature to ensure they were at room temperature by placing a thermometer on the metal washers.
- The student then lowered the washers into the beaker of water as shown in Figure 1.

Investigation Setup

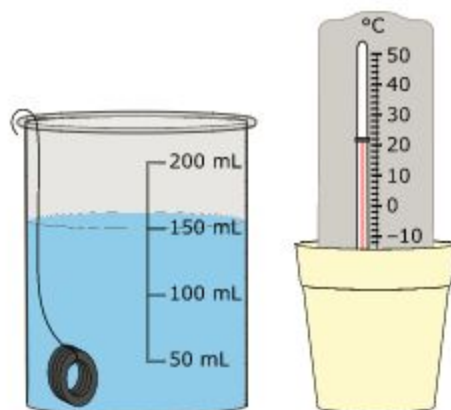


Figure 1

The student left the washers in the beaker of water for 15 minutes and then carefully removed them. The student placed a thermometer on the metal to take the temperature before adding them to the cup of water. The student lowered the washers into the water in the cup.

Student Data Table

Material	Temperature (°C)		
	30 sec	60 sec	90 sec
????	96	????	46
????	????	28	32

2. The student recorded most of the temperatures of the washers and the water in the cup after the washers were placed in the cup. However, the student forgot to label the material and some temperatures of the materials. The yellow boxes indicate missing information. Consider this experiment and select the choice below that is most likely to be an accurate representation of what happened to the materials.

A.

Material	Temperature (°C)		
	30 sec	60 sec	90 sec
Washer	96	66	46
Water	22	28	32

B.

Material	Temperature (°C)		
	30 sec	60 sec	90 sec
Washer	96	90	46
Water	32	28	32

C.

Material	Temperature (°C)		
	30 sec	60 sec	90 sec
Water	96	46	46
Washer	20	28	32

D.

Material	Temperature (°C)		
	30 sec	60 sec	90 sec
Water	96	66	46
Washer	32	28	32

Constructed Response:

Students in phys ed had to complete the pacer test. One student claims that completing the pacer test requires the interaction of multiple body systems. Use evidence to create an argument that supports this claim.